




CHRISTIE'S ROBSON LOWE

AUSTRALASIA


Burns, Philp & Company
LIMITED,
ISLAND LINE OF STEAMERS.

POST CARD.
PAQUEBOT
S.S. MATUNGA.



Chief's Tomb at Savo, Solomon Islands.

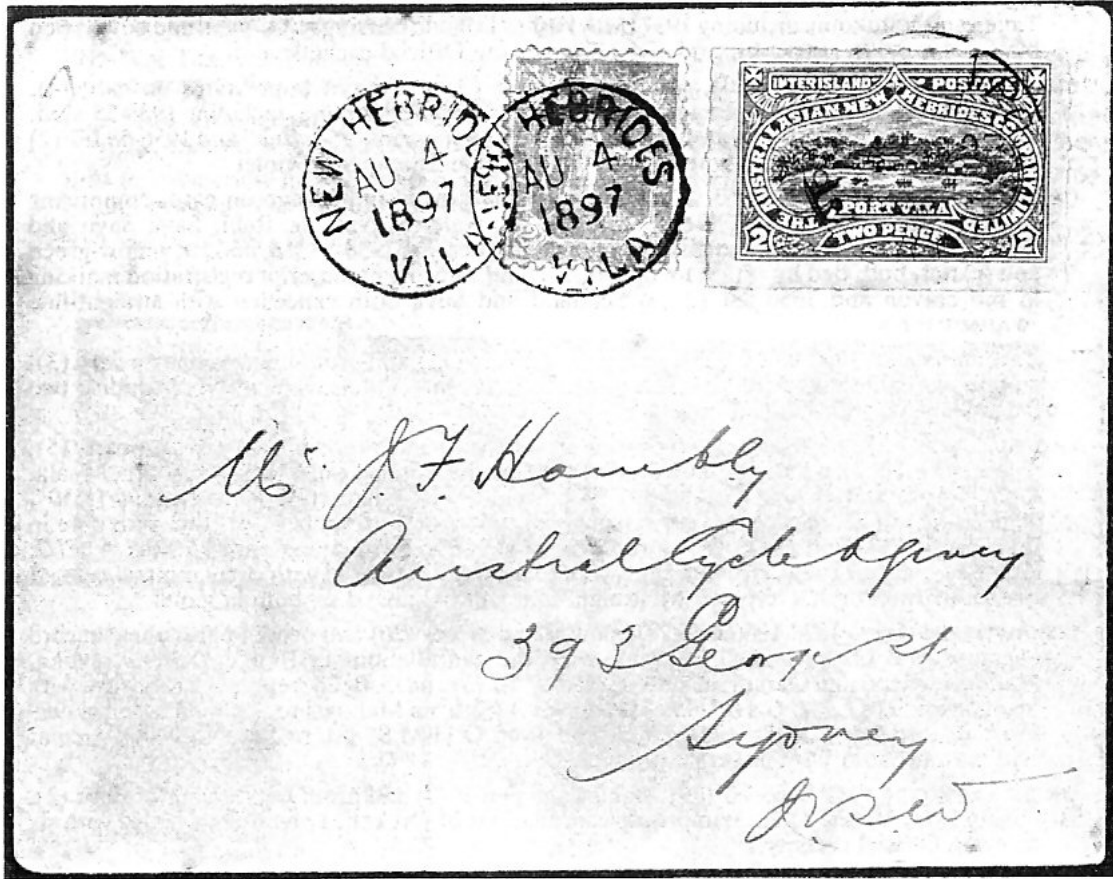
Mr W Hudson Green
49 Collins Street
South Yarra
Melbourne
Vic.



LONDON

TUESDAY 22 OCTOBER 1985

Lot	Description	Valuation
945 ☒	1956-57 ☒ (11) all from a different Post Office and all addressed to Scotland, each showing a manuscript postage due marking. (11)	£75
946T Ⓟ	1956 Waterlow File die proof of the Queen's head and surround, lettered "D" in red, numbered "20756" and marked "Gilbert + Ellice Island", rather soiled but rare. Photo	£75



947

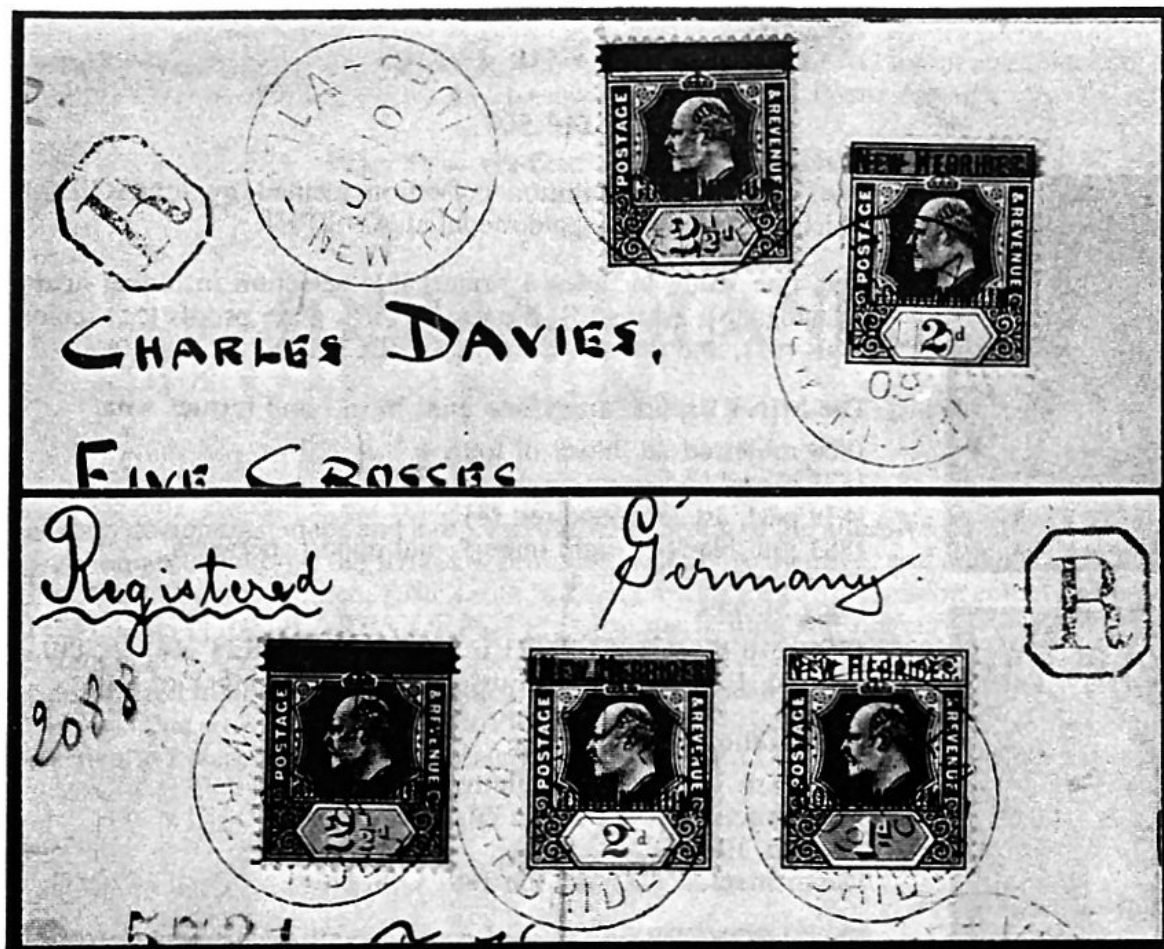
New Hebrides

947T ☒	1897 (4th Aug.) to Sydney, bearing 1897 Australasian New Hebrides Co. 2d., very lightly cancelled with Port Vila c.d.s., used in combination with N.S.W. 2½d. cancelled with superb "NEW HEBRIDES/VILA" c.d.s. with another strike alongside and arrival c.d.s. on reverse. Some light overall damp staining, nevertheless a rare and attractive franking. Ex Baldwin. Photo	£525
948T	1903 "Syndicat Francais" Locals, 5c. to 1f. set of four, each on piece cancelled to order with Port Vila c.d.s., another set with additional 15c. each with bogus Franceville double-ring c.d.s., 5c. and 1f. (2, one marginal, fine), one of each on two small pieces, each with Port Vila c.d.s., 5c. on unaddressed postcard and 25c. both with forged Port Vila c.d.s. and 15c. unused upper left corner block (5×4), two rows with light creases, one defective and some minor imperfections but a rare multiple. Some faults or defects but a scarce lot. (37)	£125
949T ☒	— ditto, 5c. (stains) tied by scarce Port Sandwich c.d.s. on face of 1905 (27th Nov.) picture postcard to France. Photo	£125
950T ☒	— ditto, a similar lot on a card to Tahiti, the c.d.s. not as clear. Photo	£100
951T ☒	1907 unaddressed picture postcard bearing New Caledonia 1905 1c. tied by Port Sandwich c.d.s., the date not very clear but apparently inverted. Light staining around adhesive otherwise fine. Photo	£75
952T ☒	— picture postcard to Paris, bearing New Caledonia 1905 10c. tied by superb Port Sandwich c.d.s. showing inverted date. Scarce. Photo	£125

Photos for lots on this page also appear on pages 44 and 55

Lot Description Valuation

954

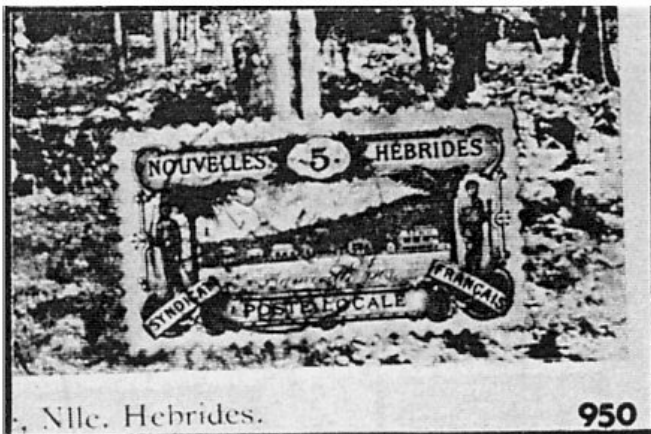


955

- 953T ☒ 1908 (20th Dec.) blue ☒ to Sydney, bearing 1908 2½d. in combination with French 25c., both cancelled with light French Port Vila c.d.s. with another strike alongside. Some light foxing around adhesives, light crease well clear of adhesives. A rare and attractive franking. Photo £250
- 954T ☒ 1909 (10th June) ☒ registered to England, bearing 1908 2d. and 2½d. cancelled at Vila with octagonal framed "R" alongside and three transit d.s. on reverse. Vertical crease well clear of adhesives. Rare and attractive. Photo £275
- 955T ☒ — (23rd Sept.) ☒ registered to Germany, bearing 1908 1d., 2d. and 2½d. cancelled at Vila, showing octagonal framed "R" and "R" in oval with, on reverse, Sydney transit c.d.s. Rare and attractive. Photo £150
- 956T ☒ 1910 (22nd Dec.) "Service Des Postes" ☒ to France, bearing 1908 1d., placed sideways, cancelled by French Port Vila c.d.s. in blue with another strike alongside. Scarce and attractive. Photo £120
- 957T ☒ 1912 (12th Mar.?) ☒ to Birmingham, bearing 1910 2d. lightly cancelled by French Port Vila c.d.s. with a distinct violet tint. Neat and attractive. Photo £150
- 958T ★ 1921 (MARCH) 1D. ON 5D. SAGE-GREEN, VARIETY SURCHARGE INVERTED, FINE MINT. VERY RARE. One of 14 recorded examples. S.G. 30a, £1000. Photo £500
- 959T ★ 1924 (1ST. MAY) 5D. ON 2½d. ULTRAMARINE, VARIETY SURCHARGE INVERTED, FINE MINT. VERY RARE. One of 20 recorded examples. S.G. 42a, £900. Photo £350
- Official Mail**
- 960T ☒ 1917 (24th May) ☒ to Sydney with Port Vila c.d.s., showing "H.B.M. RESIDENT COMMISSIONER/Royal Arms/NEW HEBRIDES" oval cachet ⚡, 1932 (5th Sept.) front (188×98 mm., creased) and 1962-74 ☒ (6, three stamped, one 256×206 mm.), all showing cachets of the Resident Commissioner in a variety of colours, one also with the Resident Education Office cachet in violet £80

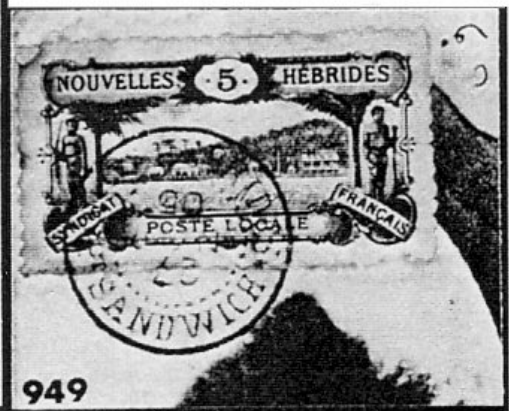
END OF THE SALE

Photos for lots on this page also appear on pages 44 and 55



Nlle. Hebrides.

950



949



Espirtu

951



952



956



953



957