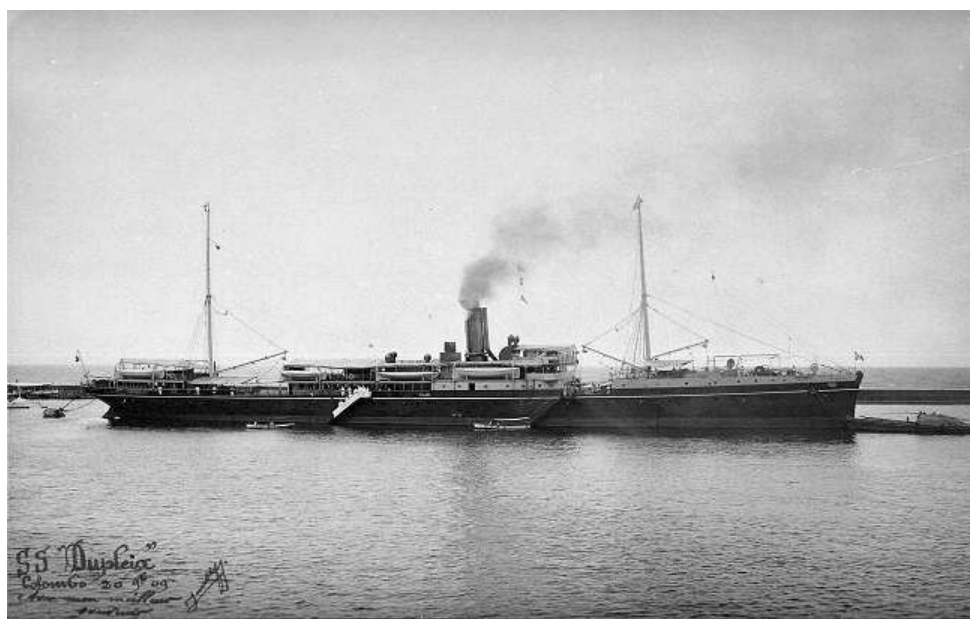


THE NEW CALEDONIA RUNS OF THE DUPLEIX II MESSAGERIES MARITIMES

16 June 2010



Lancé le 15 juin 1897 à La Seyne. Destiné à servir comme stationnaire sur la ligne Colombo-Pondichery-Madras-Calcutta en remplacement de l'ERIDAN, qui lui va à Saïgon remplacer l'ARETHUSE. Il est peint en blanc en début de carrière, puis en noir. Il reste en Orient jusqu'en 1921 puis est affecté aux lignes annexes de Madagascar et en 1924 à Nouméa, où il remplace le PACIFIQUE sur l'annexe Nouméa-Sydney. Il est démoli en décembre 1928 au Japon

<http://www.es-conseil.fr/pramona/dupleix.htm>

Year	SYDNEY departure	back at SYDNEY	port destination
1925		1925-01-02	From Marseilles
1925	1925-01-08	1925-01-19	Nouméa only -- Capt. Cerisola
1925	1925-01-22	1925-02-15	Nouméa - New Hebrides, Capt. Cerisola
1925	1925-02-19	1925-03-04	Nouméa only
1925	1925-03-11	1925-03-31	Nouméa - New Hebrides, Capt. Cerisola
1925	1925-04-03	1925-04-24	Nouméa - New Hebrides, Capt. Cerisola
1925	1925-05-02	1925-05-27	Nouméa - New Hebrides, Capt. Cerisola
1925	1925-05-30	1925-07-06	Nouméa - New Hebrides, Capt. Cerisola
1925	1925-07-10	1925-08-10	Nouméa - New Hebrides, Capt. Cerisola
1925	1925-08-14	1925-09-14	Nouméa - New Hebrides, Capt. Cerisola
1925	1925-09-18	1925-10-18	Nouméa - New Hebrides, Capt. Cerisola
1925	1925-10-23	1925-11-24	Nouméa - New Hebrides, Capt. Cerisola
1925	1925-11-28	1926-01-03	Nouméa - New Hebrides, Capt. Cerisola
1926	1925-01-08	1925-02-07	Nouméa - New Hebrides, Capt. Cerisola
1926	1926-02-12	1926-03-08	Nouméa - New Hebrides, Capt. Cerisola
1926	1926-03-23	1926-04-18	Nouméa - New Hebrides, Capt. Cerisola
1926	1926-04-23	1926-05-30	Nouméa - New Hebrides, Capt. Cerisola
1926	1926-06-04	1926-07-05	Nouméa - New Hebrides, Capt. Cerisola
1926	1926-07-09	1926-08-09	Nouméa - New Hebrides, Capt. Cerisola

1926	1926-08-13	1926-09-15	Nouméa – New Hebrides, Capt. Cerisola
1926	1926-09-25	1926-10-17	Nouméa – New Hebrides, Capt. Cerisola
1926	1926-10-22	1926-11-21	Nouméa – New Hebrides, Capt. Cerisola
1926	1926-11-26	1927-01-02	Nouméa – New Hebrides, Capt. Cerisola
1927	1927-01-07	1927-02-07	Nouméa – New Hebrides, Capt. Cerisola
1927	1927-02-11	1927-03-13	Nouméa – New Hebrides, Capt. Cerisola
1927	1927-03-18	1927-04-12	Nouméa – New Hebrides, Capt. Chambon
1927	1927-04-26	1927-05-22	Nouméa – New Hebrides, Capt. Chambon
1927	1927-05-27	1927-07-03	Nouméa – New Hebrides, Capt. Chambon
1927	1927-07-08	1927-08-06	Nouméa – New Hebrides, Capt. Chambon
1927	1927-08-12	1927-09-12	Nouméa – New Hebrides, Capt. Chambon
1927	1927-09-16	1927-10-17	Nouméa – New Hebrides, Capt. Chambon
1927	1927-10-21	1927-11-19	Nouméa – New Hebrides, Capt. Chambon
1927	1927-11-25	1927-01-05	Nouméa – New Hebrides, Capt. Chambon
1928	1928-01-10	1928-02-05	Nouméa – New Hebrides, Capt. Chambon
1928	1928-02-10	1928-03-11	Nouméa – New Hebrides, Capt. Chambon
1928	1928-03-16	1928-04-10	Nouméa – New Hebrides, Capt. Chambon
1928	1928-04-20	1928-05-20	Nouméa – New Hebrides, Capt. Chambon
1928	1928-05-25	1928-07-02	Nouméa – New Hebrides, Capt. Frilet
1928	1928-07-06	1928-08-05	Nouméa – New Hebrides, Capt. Frilet
1928	1928-08-10	1928-09-12	Nouméa – New Hebrides, Capt. Frilet
1928	1928-09-15		Nouméa – New Hebrides, Capt. Frilet
Last run of the Duplex II - the return run from Nouméa was made by "La Prouse" under Capt. Frilet.			