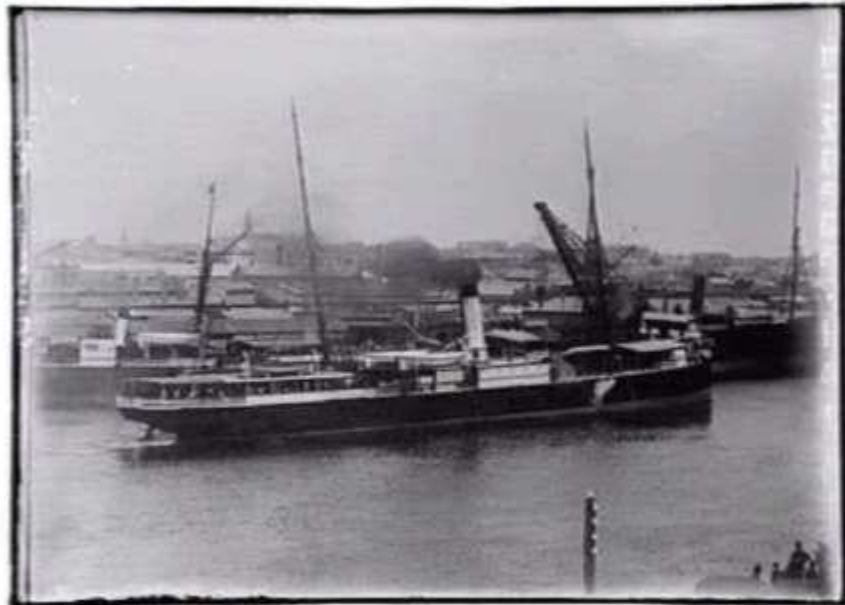


FLINDERS

29 January 2012



FLINDERS 948 gross tons, 499 net. Lbd: 227'1" x 28'3" x 20'1". Iron steamship built by A & J Inglis, Glasgow for Tasmanian S N Co., Hobart. Compounded engine producing 200 horsepower. As a passenger vessel, was designed for the various Tasmania - mainland routes undertaken by that company. May 1891 taken over by Union Steamship Co of New Zealand. February 1894 sold to McIlwraith, McEacharn Ltd., Melbourne after being chartered from 1893, and placed upon the Western Australian 'Goldfields' run. Visited mostly Albany with passengers only, and returning at times via the western coastal ports of Victoria, which she ultimately traded out of once the goldrush traffic phased itself out. November 1896 owned by J McIlwraith Snr. July 1907 purchased by Adelaide Steamship Co and placed upon their South Australian coastal trades. 1911 caught fire resulting in irreparable damage and hulked. Sold 1927 and totally stripped, finally abandoned on the North Arm, Port Adelaide

Source: <http://www.flotilla-australia.com/>

Year	Departure	Arrival	Port Destination
McIlwraith, McEacharn Ltd., Melbourne			
1894	1894-08-22	1894-09-25	New Hebrides & BSIP
Chartered by Messrs. Kerr Bros. Port Vila.			
1912	1912-04-23 Brisbane	1912-07-21 Sydney	New Hebrides
1912	1912-07-30 Sydney	1912-09-23 Sydney	New Hebrides
1913	1912-09-30 Sydney	1913-04-26 Brisbane	New Hebrides