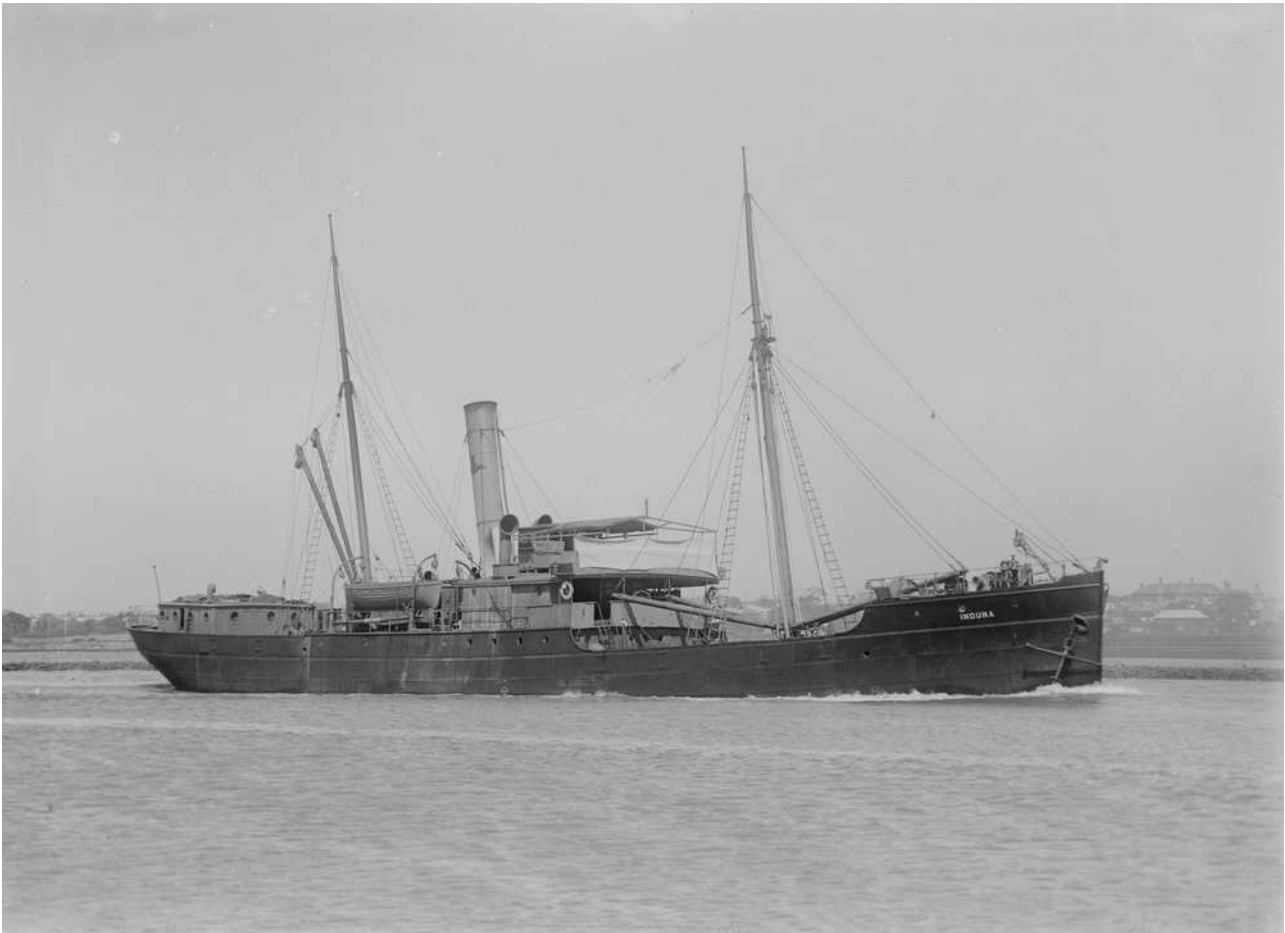


INDUNA

22 January 2012



S.S. INDUNA

Picture courtesy of the State Library of Victoria

The Induna was a steel steamship built by Hall, Russell & Co. of Aberdeen. 703 gross tons, 429 net. Lbd: 190'4" x 28'5" x 11'2". Triple expansion engine producing 98 horsepower.

She was built as a passenger-cargo vessel for J Rennie & Co., Aberdeen. In 1904 sold to Henry Edwin Campbell, London, with tonnage reduction to 699 gross. Later in 1904 sold to Burns, Philip & Co., Sydney, Australia, who placed her on the Lord Howe Island and Norfolk Island run. 1905 until 1916 placed upon the Gilbert, Marshall and Caroline Islands' run as well as the New Hebrides. She was captured at Jaluit in 1914 and not released until October of that year. She spent most of the war years back on the Lord, Howe, Norfolk and New Hebrides run.

In 1918 transferred to the Rabaul service. She was laid up in 1919 until August and from August to November 1919 back on the Rabaul run before being sold to the Patrick Steamship Co., Sydney, in 1920 with tonnage reduction to 678 gross. 1925 sold to the Railway Commissioners for New South Wales, Sydney and converted into a train-ferry, 1932 laid up and sold for use as a wharf at Grafton, 1957 remains cut up as scrap.

Historical note: Winston Churchill travelled this ship after his escape from the Boers at the time when she was employed on the South African coastal route.

Most data from <http://www.flotilla-australia.com/burnsphilp.htm#induna-bp>

Year	Sydney Departure	Sydney Arrival	Port Destination
1905	1904-12-31	1905-02-18	Lord Howe, Norfolk, New Hebrides
1905	1905-03-01	1905-04-21	Lord Howe, Norfolk, New Hebrides
1905	1905-05-02	1905-06-23	Lord Howe, Norfolk, New Hebrides
1905	1905-06-26	1905-09-05	Gilbert & Ellice via Vila
1905	1905-09-15	1905-12-13	Marshall Islands, Gilbert & Ellice via Vila
1906	1905-12-18	1906-03-01	Marshall Islands, Gilbert & Ellice via Vila
1906	1906-03-15	1906-06-07	Marshall Islands, Gilbert & Ellice via Vila
1906	1906-06-15	1906-09-02	Marshall Islands, Gilbert & Ellice via Vila
1906	1906-09-30	1906-11-20	Lord Howe, Norfolk, New Hebrides
1907	1906-12-01	1907-01-21	Lord Howe, Norfolk, New Hebrides
1907	1907-02-01	1907-03-22	Lord Howe, Norfolk, New Hebrides
1907	1907-03-31	1907-05-25	Lord Howe, Norfolk, New Hebrides
1907	1907-06-02	1907-07-22	Lord Howe, Norfolk, New Hebrides
1907	1907-08-01	1907-09-21	Lord Howe, Norfolk, New Hebrides
1907	1907-10-01	1907-11-20	Lord Howe, Norfolk, New Hebrides
1908	1907-12-02	1908-01-24	Lord Howe, Norfolk, New Hebrides
1908	1908-02-01	1908-02-24	Lord Howe, Norfolk, New Hebrides
1909	1908-03-27	1909-05-22	Inter-island Vessel for Marshall, Gilbert & Ellice
1910	1909-06-12	1910-10-10	Inter-island Vessel for Marshall, Gilbert & Ellice
1911	1910-10-28	1911-10-11	Inter-island Vessel for Marshall, Gilbert & Ellice
1912	1910-11-02	1912-10-11	Inter-island Vessel for Marshall, Gilbert & Ellice
1913	1912-12-21	1913-12-05	Inter-island Vessel for Marshall, Gilbert & Ellice
1914	1913-12-22	1914-10-14	Captured at Jaluit.
1914	1914-11-02	1914-12-03	Solomon & Shortland Islands
1915	1914-12-13	1915-01-16	Solomon & Shortland Islands
1915	1915-02-27	1915-04-25	Lord Howe, Norfolk, New Hebrides, Gilbert & Ellice
1915	1915-05-01	1916-02-22	New Hebrides
1916	1916-03-03	1916-10-27	Lord Howe, Norfolk, New Hebrides
1917	1917-01-31	1917-09-16	Lord Howe, Norfolk, New Hebrides
1917	1917-01-31	1917-11-30	Lord Howe, Norfolk, New Hebrides

1918	Not Found	1918-02-04	Rabaul
1918	Not Found	1918-03-26	Rabaul
1918	Not Found	1918-05-10	Rabaul
1918	1918-06-19	1918-06-26	To Lord Howe to rescue stranded Makambo
1918	1918-06-29	1918-08-18	Rabaul/Solomons
1918	1918-09-07	1918-11-23	Gilbert & Ellice
1919	-	-	Laid up in Oyster Bay
1919	1919-08-30	1919-09-26	Rabaul
1919	1919-10-03	1919-10-30	Rabaul
1919	1919-11-08	1919-12-03	Rabaul
1919	1919-12-13	1919-12-30	Norfolk Island
1920	1919-02-25	1920-05-18	Rabaul

Sold to Patrick Steamship Co July 1920.