

The New Hberides runs of the malaita I
 Burns philp & co. ltd.
 29 Jan 2012

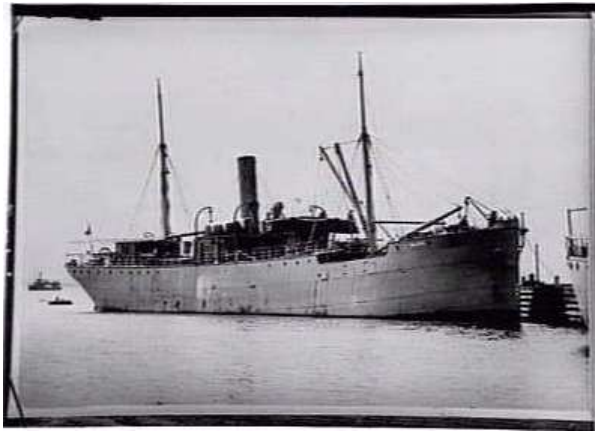


Image and Information thanks to <http://www.flotilla-australia.com/images/malaita1-bp-slv.jpg>

929 gross tons. Lbd: 200' x 30'2" x 12'3". (61 x 9.2 metres) Steel single screw steamship built Grangemouth Dockyard, Grangemouth 1893 as the *Antilla* for the Bahamas Steamship Co Ltd, Nassau. Triple expansion engine making 10 knots. 1904 damaged by fire. Purchased in 1905, reconditioned and renamed by Burns, Philp & Co., she was purchased for trade in the Pacific islands. Bought by Huddart Parker in 1914 and converted into a coal hulk, later sold to Moreland Smelting Co Ltd., 1918 or 1919, towed to Melbourne where the engines of the paddle steamer *Excelsior* were installed. Registered in Melbourne by H B Black & Co Ltd. On November 17th 1926, in Port Phillip Bay Victoria while swinging on the pick (at anchor) during heavy weather she was blown ashore and demolished the South Melbourne baths; refloated, partially dismantled and scuttled in the ships graveyard, off Port Philip heads, 20 November 1927

Year	SYDNEY departure	back at SYDNEY	port destination
1905	1905-09-01	1905-10-19	NEW HEBRIDES, Lord Howe Id., & Norfolk Id – First voyage
1905	1905-11-01	1905-12-19	NEW HEBRIDES via Lord Lord Howe Id., & Norfolk Id.
1906	1906-01-01	1906-02-20	NEW HEBRIDES via Lord Lord Howe Id., & Norfolk Id.
1906	1906-03-01	1906-04-19	NEW HEBRIDES via Lord Lord Howe Id., & Norfolk Id.
1906	1906-05-01	1906-06-19	NEW HEBRIDES via Lord Lord Howe Id., & Norfolk Id.
1906	1906-06-30	1906-07-27	NEW HEBRIDES via Lord Lord Howe Id., & Norfolk Id.
1907	1907-08-03	1907-09-28	NEW HEBRIDES – G & E islands – NEW HEBRIDES
1907	1907-10-07	1907-12-08	NEW HEBRIDES – G & E islands – NEW HEBRIDES
1907	1907-12-19	1908-02-12	NEW HEBRIDES – G & E islands – NEW HEBRIDES
1908	1908-02-29	1908-03-27	NEW HEBRIDES, Lord Howe Id., Norfolk Id.
1908	1908-04-01	1908-05-26	NEW HEBRIDES
1908	1908-06-01	1908-07-24	NEW HEBRIDES
1908	1908-08-04	1908-09-24	NEW HEBRIDES
1908	1908-10-01	1908-11-22	NEW HEBRIDES
1908	1908-12-01	1909-01-22	NEW HEBRIDES
1909	1909-02-01	1909-03-23	NEW HEBRIDES
1909	1909-04-01	1909-05-25	NEW HEBRIDES, Lord Howe Id., Norfolk Id.
1909	1909-06-01	1909-06-29	NEW HEBRIDES, Lord Howe Id., Norfolk Id.
1909	1909-07-04	1909-08-26	NEW HEBRIDES, Lord Howe Id., Norfolk Id.
1909	1909-09-01	1909-11-24	NEW HEBRIDES, Lord Howe Id., Norfolk Id. NH double turn

1910	1910-01-28	1910-03-24	NEW HEBRIDES, Lord Howe Id., Norfolk Id.
1910	1910-04-01	1910-04-28	NEW HEBRIDES, Lord Howe Id., Norfolk Id.
1910	1910-06-02	1910-07-26	NEW HEBRIDES, Lord Howe Id., Norfolk Id.
1910	1910-08-01	1910-09-26	NEW HEBRIDES, Lord Howe Id., Norfolk Id.
1910	1910-10-01	1910-11-21	NEW HEBRIDES, Lord Howe Id., Norfolk Id.
1910	1910-12-01	1911-01-19	NEW HEBRIDES, Lord Howe Id., Norfolk Id.
1911	1911-02-01	1911-03-22	NEW HEBRIDES, Lord Howe Id., Norfolk Id.
1911	1911-04-02	1911-05-24	NEW HEBRIDES, Lord Howe Id., Norfolk Id.
1911	1911-06-01	1911-07-25	NEW HEBRIDES, Lord Howe Id., Norfolk Id.
1911	1911-08-01	1911-09-24	NEW HEBRIDES, Lord Howe Id., Norfolk Id.
1911	1911-10-01	1911-11-21	NEW HEBRIDES, Lord Howe Id., Norfolk Id.
1911	1911-12-01	1912-01-20	NEW HEBRIDES, Lord Howe Id., Norfolk Id.
1912	1912-02-01	1912-03-23	NEW HEBRIDES, Lord Howe Id., Norfolk Id.
1912	1912-04-01	1912-05-23	NEW HEBRIDES, Lord Howe Id., Norfolk Id.
1912	1912-06-01	1912-07-23	NEW HEBRIDES, Lord Howe Id., Norfolk Id.
1912	1912-07-29	1912-09-23	NEW HEBRIDES, Lord Howe Id., Norfolk Id.
1912	1912-10-01	1912-11-22	NEW HEBRIDES, Lord Howe Id., Norfolk Id.

Year	SYDNEY departure	back at SYDNEY	port destination
1912	1912-12-01	1913-01-20	NEW HEBRIDES, Lord Howe Id., Norfolk Id.
1913	1913-02-02	1913-03-21	NEW HEBRIDES, Lord Howe Id., Norfolk Id.
1913	1913-04-01	1913-05-22	NEW HEBRIDES, Lord Howe Id., Norfolk Id.
1913	1913-06-01	1913-07-23	NEW HEBRIDES, Lord Howe Id., Norfolk Id.
1913	1913-08-01	1913-09-23	NEW HEBRIDES, Lord Howe Id., Norfolk Id.
1913	1913-10-02	1913-11-22	NEW HEBRIDES, Lord Howe Id., Norfolk Id.
1913	1913-12-01	1914-02-21	NEW HEBRIDES, Lord Howe Id., Norfolk Id.
1914	1914-02-28	1914-04-22*	NEW HEBRIDES, Lord Howe Id., Norfolk Id. – Last voyage
The MALAITA was converted into a coal hulk.			