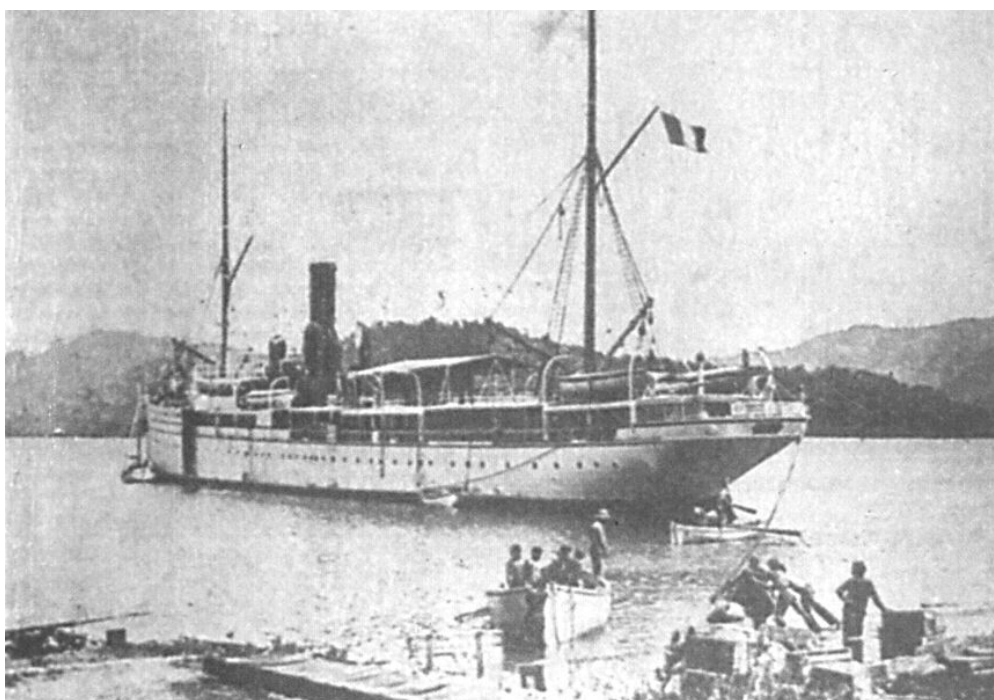


THE NEW HEBRIDES RUNS OF THE PACIFIQUE MESSAGERIES MARITIMES

28 March 2011



Le PACIFIQUE in Port-Vila. Image & information thanks to Philippe Ramona's
<http://www.messageries-maritimes.org/pacifiqu.htm>

Technical details: length: 93,98 m, width: 10,07 m, 2630 to.

History: Launched on 26 march 1899 in La Ciotat. Destined for the "ligne annexe" Sydney-Nouméa-New Hebrides in replacement of the TANAIS. Served without greater interruption until she was demolished in March 1925. She was replaced by the DUPLEIX II

Year	Sydney departure	back at Sydney	days	port destination
1899		1899-10-27		Sydney from Marseille, maiden voyage
1899	1899-11-15	1899-11-26	11	Noumea ONLY – annex to ARMAND BEHIC
1899	1899-12-13	1899-12-24	11	Noumea ONLY – annex to AUSTRALIEN
1900	1900-01-06	1900-01-17	11	Noumea ONLY – annex to VILLE DE LA CIOTAT
1900	1900-02-03	1900-02-14	11	Noumea ONLY – annex to POLYNESIEN
1900	1900-03-03	1900-03-14	11	Noumea ONLY – annex to ARMAND BEHIC
1900	1900-04-01	1900-04-10	9	Noumea ONLY – annex to AUSTRALIEN
1900	1900-05-02	1900-05-13	11	Noumea ONLY – annex to VILLE DE LA CIOTAT
1900	1900-05-29	1900-06-10	12	Noumea ONLY – annex to POLYNESIEN
1900	1900-06-26	1900-07-08	12	Noumea ONLY – annex to ARMAND BEHIC
1900	1900-07-24	1900-08-05	12	Noumea ONLY – annex to AUSTRALIEN
1900	1900-08-22	1900-09-02	11	Noumea ONLY – annex to VILLE DE LA CIOTAT
1900	1900-09-19	1900-10-02	13	Noumea ONLY – annex to POLYNESIEN
1900	1900-10-16	1900-10-28	12	Noumea ONLY – annex to ARMAND BEHIC
1900	1900-11-13	1900-11-24	11	Noumea ONLY – annex to AUSTRALIEN
1900	1900-12-12	1900-12-23	11	Noumea ONLY – annex to VILLE DE LA CIOTAT
1901	1901-01-09	1901-01-20	11	Noumea ONLY – annex to POLYNESIEN

Year	Sydney departure	back at Sydney	days	port destination
1901	1901-02-07	1901-02-17	10	Noumea ONLY – annex to ARMAND BEHIC
1901	1901-03-04	1901-03-17	13	Noumea ONLY – annex to AUSTRALIEN
1901	1901-03-20	1901-03-31	11	Noumea ONLY – annex to TONKIN
1901	1901-04-04	1901-04-15	11	Noumea ONLY – annex to VILLE DE LA CIOTAT
1901	1901-04-30	1901-05-11	11	Noumea ONLY – annex to POLYNESIEN
1901	1901-05-29	1901-06-09	11	Noumea ONLY – annex to ARMAND BEHIC
1901	1901-06-26	1901-07-08	12	Noumea ONLY – annex to AUSTRALIEN
1901	1901-07-23	1901-08-04	12	Noumea ONLY – annex to VILLE DE LA CIOTAT
1901	1901-08-19	1901-09-03	15	Noumea ONLY – annex to POLYNESIEN
1901	1901-09-17	1901-09-28	11	Noumea ONLY – annex to TONKIN
1901	1901-10-15	1901-10-26	11	Noumea ONLY – annex to ARMAND BEHIC
1901	1901-11-13	1901-11-24	11	Noumea ONLY – annex to OCEANIEN
1901	1901-11-27	1901-12-08	11	Noumea ONLY – annex to TONKIN
1901	1901-12-11	1901-12-23	12	Noumea ONLY – annex to POLYNESIEN
1902	1902-01-07	1902-01-19	12	Noumea ONLY – annex to TONKIN
1902	1902-02-04	1902-02-16	12	Noumea ONLY – annex to AUSTRALIEN
1902	1902-03-07	1902-03-17	10	Noumea ONLY – annex to ANNAM
1902	1902-03-20	1902-03-30	10	Noumea ONLY
1902	1902-04-03	1902-04-15	12	Noumea ONLY – annex to POLYNESIEN
1902	1902-04-29	1902-05-11	12	Noumea ONLY – annex to VILLE DE LA CIOTAT
1902	1902-05-27	1902-06-07	11	Noumea ONLY – annex to ARMAND BEHIC
1902	1902-06-24	1902-07-06	12	Noumea ONLY – annex to AUSTRALIEN
1902	1902-07-18	1902-08-04	17	Noumea ONLY – annex to INDUS
1902	1902-08-20	1902-09-01	12	Noumea ONLY – annex to VILLE DE LA CIOTAT
1902	1902-09-17	1902-09-28	11	Noumea ONLY – annex to ARMAND BEHIC
1902	1902-10-14	1902-10-26	12	Noumea ONLY – annex to AUSTRALIEN
1902	1902-11-08	1902-11-23	15	Noumea ONLY – annex to POLYNESIEN
1902	1902-11-26	1902-12-06	10	Noumea ONLY
1902	1902-12-11	1902-12-23	12	Noumea ONLY – annex to VILLE DE LA CIOTAT
1903	1903-01-12	1903-01-22	10	Noumea ONLY – annex to ARMAND BEHIC
1903	1903-01-24	1903-02-03	10	Noumea ONLY
1903	1903-02-05	1903-02-16	11	Noumea ONLY – annex to AUSTRALIEN
1903	1903-03-04	1903-03-16	12	Noumea ONLY – annex to POLYNESIEN
1903	1903-04-01	1903-04-13	12	Noumea ONLY – annex to VILLE DE LA CIOTAT
1903	1903-04-29	1903-05-11	12	Noumea ONLY – annex to DUMBEA
1903	1903-05-27	1903-06-08	12	Noumea ONLY – annex to AUSTRALIEN
1903	1903-06-24	1903-07-06	12	Noumea ONLY – annex to NERA
1903	1903-08-05	1903-08-17	12	Noumea ONLY – annex to ARMAND BEHIC
1903	1903-08-26	1903-09-13	18	Noumea ONLY – annex to DUMBEA
1903	1903-09-30	1903-10-12	12	Noumea ONLY – annex to VILLE DE LA CIOTAT
1903	1903-10-28	1903-11-09	12	Noumea ONLY – annex to OCEANIEN
1903	1903-11-25	1903-12-07	12	Noumea ONLY – annex to NERA
1903	1903-12-22	1904-01-02	11	Noumea ONLY – annex to CALEDONIEN
1904	1904-01-14	1904-01-31	17	Noumea - NH – Noumea – annex to DUMBEA

Year	Sydney departure	back at Sydney	days	port destination
1904	1904-02-12	1904-02-28	16	Noumea - NH – Noumea – to VILLE DE LA CIOTAT
1904	1904-03-09	1904-03-27	18	Noumea - NH – Noumea – annex to OCEANIEN
1904	1904-04-07	1904-04-24	17	Noumea - NH – Noumea – annex to NERA
1904	1904-05-05	1904-05-22	17	Noumea - NH – Noumea – annex to CALEDONIEN
1904	1904-06-01	1904-06-19	18	Noumea - NH – Noumea – annex to DUMBEA
1904	1904-06-30	1904-07-17	17	Noumea - NH – Noumea – to VILLE DE LA CIOTAT
1904	1904-07-27	1904-08-13	17	Noumea - NH – Noumea – to ARMAND BEHIC
1904	1904-08-23	1904-09-11	19	Noumea - NH – Noumea – annex to NERA
1904	1904-09-20	1904-10-09	19	Noumea - NH – Noumea – annex to CALEDONIEN
1904	1904-10-19	1904-11-07	19	Noumea - NH – Noumea – no annex strike at Marseill.
1904	1904-11-16	1904-12-05	19	Noumea - NH – Noumea – no annex strike at Marseill.
1904	1904-12-21	1905-01-01	11	Noumea - NH – Noumea – annex to ARMAND BEHIC
1905	1905-01-11	1905-01-29	18	Noumea - NH - Noumea – to VILLE DE LA CIOTAT
1905	1905-02-14	1905-02-25	11	Noumea - NH – Noumea – annex to YARRA
1905	1905-03-08	1905-03-26	18	Noumea - NH – Noumea – annex to NERA
1905	1905-04-04	1905-04-23	19	Noumea - NH – Noumea – annex to SYDNEY
1905	1905-05-03	1905-05-25	22	Noumea - NH – Noumea – annex to AUSTRALIEN
1905	1905-05-31	1905-06-18	18	Noumea - NH – Noumea – to VILLE DE LA CIOTAT
1905	1905-06-28	1905-07-16	18	Noumea - NH – Noumea – annex to YARRA
1905	1905-07-26	1905-08-12	17	Noumea - NH – Noumea – annex to NERA
1905	1905-08-22	1905-09-13	22	Noumea - NH – Noumea – annex to DUMBEA
1905	1905-09-19	1905-10-08	19	Noumea - NH – Noumea – annex to AUSTRALIEN
1905	1905-10-18	1905-11-04	17	Noumea - NH – Noumea – to VILLE DE LA CIOTAT
1905	1905-11-15	1905-12-03	18	Noumea - NH – Noumea – annex to YARRA
1905	1905-12-20	1905-12-30	10	Noumea – NH – Noumea – annex to NERA
1906	1906-01-10	1906-01-28	18	Noumea - NH – Noumea – annex to SYDNEY
1906	1906-02-13	1906-02-25	12	Noumea ONLY – annex to AUSTRALIEN
1906	1906-03-07	1906-03-25	18	Noumea - NH – Noumea – to VILLE DE LA CIOTAT
1906	1906-04-03	1906-04-22	19	Noumea - NH – Noumea – annex to YARRA
1906	1906-05-02	1906-05-20	18	Noumea - NH – Noumea – annex to NERA
1906	1906-06-03	1906-06-17	14	Noumea - NH – Noumea – annex to SYDNEY
1906	1906-06-27	1906-07-14	17	Noumea - NH – Noumea – annex to AUSTRALIEN
1906	1906-07-25	1906-08-13	19	Noumea - NH – Noumea – to VILLE DE LA CIOTAT
1906	1906-08-22	1906-09-09	18	Noumea - NH – Noumea – annex to YARRA
1906	1906-09-19	1906-10-07	18	Noumea - NH – Noumea – annex to DUMBEA
1906	1906-10-17	1906-11-04	18	Noumea - NH – Noumea – annex to SYDNEY
1906	1906-11-14	1906-12-02	18	Noumea - NH – Noumea – annex to ARMAND BEHIC
1906	1906-12-19	1906-12-30	11	Noumea ONLY – to VILLE DE LA CIOTAT
1907	1907-01-09	1907-01-27	18	Noumea - NH – Noumea – annex to NERA
1907	1907-02-13	1907-02-24	11	Noumea - NH – Noumea – annex to DUMBEA
1907	1907-03-06	1907-03-25	19	Noumea - NH – Noumea – annex to SYDNEY
1907	1907-04-03	1907-04-21	18	Noumea - NH – Noumea – annex to ARMAND BEHIC
1907	1907-04-30	1907-05-19	19	Noumea - NH – Noumea – annex to YARRA
1907	1907-05-29	1907-06-16	18	Noumea - NH – Noumea – annex to NERA

Year	Sydney departure	back at Sydney	days	port destination
1907	1907-06-26	1907-07-14	18	Noumea - NH – Noumea – annex to DUMBEA
1907	1907-07-24	1907-08-12	19	Noumea - NH – Noumea – to VILLE DE LA CIOTAT
1907	1907-08-21	1907-09-08	18	Noumea - NH – Noumea – annex to ARMAND BEHIC
1907	1907-09-18	1907-10-06	18	Noumea - NH – Noumea – annex to OCEANIEN
1907	1907-10-16	1907-11-03	18	Noumea - NH – Noumea – annex to CALEDONIEN
1907	1907-11-13	1907-12-01	18	Noumea - NH – Noumea – annex to DUMBEA
1907	1907-12-11	1907-12-29	18	Noumea - NH – Noumea – to VILLE DE LA CIOTAT
1908	1908-01-15	1908-01-26	11	Noumea - NH – Noumea – annex to AUSTRALIEN
1908	1908-02-05	1908-02-23	18	Noumea - NH – Noumea – annex to NERA
1908	1908-03-04	1908-03-22	18	Noumea - NH – Noumea – annex to CALEDONIEN
1908	1908-04-01	1908-04-19	18	Noumea - NH – Noumea – annex to DUMBEA
1908	1908-04-29	1908-05-17	18	Noumea - NH – Noumea – to VILLE DE LA CIOTAT
1908	1908-05-27	1908-06-14	18	Noumea - NH – Noumea – annex to OCEANIEN
1908	1908-06-24	1908-07-12	18	Noumea - NH – Noumea – annex to NERA
1908	1908-07-22	1908-08-10	19	Noumea - NH – Noumea – annex to SALAZIE
1908	1908-08-19	1908-09-06	18	Noumea - NH – Noumea – annex to DUMBEA
1908	1908-09-16	1908-10-04	18	Noumea - NH – Noumea – annex to SYDNEY
1908	1908-10-14	1908-11-01	18	Noumea - NH – Noumea – annex to OCEANIEN
1908	1908-11-11	1908-11-29	18	Noumea - NH – Noumea – annex to NERA
1908	1908-12-09	1908-12-27	18	Noumea - NH – Noumea – annex to AUSTRALIEN
1909	1909-01-13	1909-01-24	11	Noumea – annex to YARRA – connect. «Oui Oui» to the NH
1909	1909-02-04	1909-02-21	17	Noumea - NH – Noumea – to VILLE DE LA CIOTAT
1909	1909-03-10	1909-03-21	11	Noumea - NH – Noumea – annex to ARMAND BEHIC
1909	1909-03-31	1909-04-18	18	Noumea - NH – Noumea – annex to DUMBEA
1909	1909-04-29	1909-05-16	17	Noumea - NH – Noumea – annex to AUSTRALIEN
1909	1909-05-26	1909-06-13	18	Noumea - NH – Noumea – annex to SALAZIE
1909	1909-06-23	1909-07-11	18	Noumea - NH – Noumea – to VILLE DE LA CIOTAT
1909	1909-07-21	1909-08-09	19	Noumea - NH – Noumea – no annex strike at Marseill.
1909	1909-08-18	1909-09-06	19	Noumea - NH – Noumea – annex to NERA
1909	1909-09-15	1909-10-03	18	Noumea - NH – Noumea – annex to DUMBEA
1909	1909-10-13	1909-10-31	18	Noumea - NH – Noumea – annex to SALAZIE
1909	1909-11-10	1909-11-28	18	Noumea - NH – Noumea – to VILLE DE LA CIOTAT
1909	1909-12-04	1909-12-27	23	Noumea - NH – Noumea – annex to AUSTRALIEN
1910	1910-01-13	1910-01-25	12	Noumea - NH – Noumea – annex to CALEDONIEN
1910	1910-02-03	1910-02-20	17	Noumea - NH – Noumea – annex to DUMBEA
1910	1910-03-09	1910-03-20	11	Noumea - NH – Noumea – annex to SYDNEY
1910	1910-03-31	1910-04-18	18	Noumea - NH – Noumea – to VILLE DE LA CIOTAT
1910	1910-04-26	1910-05-15	19	Noumea - NH – Noumea – annex to NERA
1910	1910-05-25	1910-06-13	19	Noumea - NH – Noumea – annex to CALEDONIEN
1910	1910-06-22	1910-07-11	19	Noumea - NH – Noumea – annex to DUMBEA
1910	1910-07-20	1910-08-07	18	Noumea - NH – Noumea – annex to SYDNEY
1910	1910-08-14	1910-09-04	21	Noumea - NH – Noumea – annex to NERA
1910	1910-09-08	1910-10-03	25	Noumea - NH – Noumea – annex to CALEDONIEN
1910	1910-10-08	1910-10-30	22	Noumea - NH – Noumea – annex to SALAZIE

Year	Sydney departure	back at Sydney	days	port destination
1910	1910-11-09	1910-11-27	18	Noumea - NH – Noumea – annex to ARMAND BEHIC
1910	1910-12-07	1910-12-25	18	Noumea - NH – Noumea – annex to AUSTRALIEN
1911	1911-01-11	1911-01-22	11	Noumea - NH – Noumea – annex to NERA
1911	1911-02-01	1911-02-19	18	Noumea - NH – Noumea – annex to YARRA
1911	1911-03-08	1911-03-21	13	Noumea - NH – Noumea – annex to DUMBEA
1911	1911-03-29	1911-04-16	18	Noumea - NH – Noumea – annex to ARMAND BEHIC
1911	1911-04-26	1911-05-14	18	Noumea - NH – Noumea – annex to CALEDONIEN
1911	1911-05-24	1911-06-15	22	Noumea - NH – Noumea – annex to SYDNEY
1911	1911-08-14	1911-09-03	20	Noumea - NH – Noumea – annex to AUSTRALIEN
1911	1911-09-13	1911-10-01	18	Noumea - NH – Noumea – annex to NERA
1911	1911-10-11	1911-10-29	18	Noumea - NH – Noumea – annex to OCEANIEN
1911	1911-11-08	1911-11-26	18	Noumea - NH – Noumea – annex to YARRA
1911	1911-12-06	1911-12-24	18	Noumea - NH – Noumea – annex to POLYNESIEN
1912	1912-01-09	1912-01-21	12	Noumea ONLY – annex to VILLE DE LA CIOTAT
1912	1912-01-30	1912-02-18	19	Noumea - NH – Noumea – annex to NERA
1912	1912-03-07	1912-03-16	9	Océanien made the trip, no NH PACIFIQUE in Mort's dock
1912	1912-03-26	1912-04-13	18	Noumea - NH – Noumea – annex to ARMAND BEHIC
1912	1912-04-24	1912-05-12	18	Noumea - NH – Noumea – annex to CALEDONIEN
1912	1912-05-21	1912-06-08	18	Noumea - NH – Noumea – annex to SYDNEY
1912	1912-06-18	1912-07-06	18	Noumea - NH – Noumea – annex to DUMBEA
1912	1912-07-17	1912-08-04	18	Noumea - NH – Noumea – annex to AUSTRALIEN
1912	1912-08-14	1912-09-03	20	Noumea - NH – Noumea – no annex strike at Marseill.
1912	1912-09-10	1912-09-29	19	Noumea - NH – Noumea – annex to YARRA
1912	1912-10-09	1912-10-27	18	Noumea - NH – Noumea – annex to OCEANIEN
1912	1912-11-06	1912-11-27	21	Noumea - NH – Noumea – annex to POLYNESIEN
1912	1912-12-04	1912-12-23	19	Noumea - NH – Noumea – annex to ARMAND BEHIC
1912	1912-12-31	1913-01-19	19	Noumea - NH – Noumea – annex to SYDNEY
1913	1913-01-29	1913-02-16	18	Noumea - NH – Noumea – annex to YARRA
1913	1913-03-02	1913-03-14	12	Noumea - NH – Noumea – annex to AUSTRALIEN
1913	1913-03-25	1913-04-11	17	Noumea - NH – Noumea – annex to CALEDONIEN
1913	1913-04-21	1913-05-09	18	Noumea - NH – Noumea – annex to DUMBEA
1913	1913-05-15	1913-06-06	22	Noumea - NH – Noumea – to VILLE DE LA CIOTAT
1913	1913-06-16	1913-07-05	19	Noumea - NH – Noumea – annex to NERA
1913	1913-07-14	1913-08-02	19	Noumea - NH – Noumea – annex to SYDNEY
1913	1913-08-11	1913-09-02	22	Noumea - NH – Noumea – annex to POLYNESIEN
1913	1913-09-08	1913-09-26	18	Noumea - NH – Noumea – annex to DUMBEA
1913	1913-10-06	1913-10-24	18	Noumea - NH – Noumea – to VILLE DE LA CIOTAT
1913	1913-11-04	1913-11-21	17	Noumea - NH – Noumea – annex to NERA
1913	1913-12-01	1913-12-15	14	Noumea - NH – Noumea – annex to SYDNEY
1914	1914-01-05	1914-01-16	11	Noumea - NH – Noumea – annex to CALEDONIEN
1914	1914-01-26	1914-02-13	18	Noumea - NH – Noumea – annex to ARMAND BEHIC
1914	1914-03-02	1914-03-13	11	Noumea - NH – Noumea – to VILLE DE LA CIOTAT
1914	1914-03-23	1914-04-10	18	Noumea - NH – Noumea – annex to SYDNEY
1914	1914-04-23	1914-05-08	15	Noumea - NH – Noumea – annex to DUMBEA

Year	Sydney departure	back at Sydney	days	port destination
1914	1914-05-18	1914-06-05	18	Noumea - NH – Noumea – annex to CALEDONIEN
1914	1914-06-15	1914-07-03	18	Noumea - NH – Noumea – annex to NERA
1914	1914-07-14	1914-07-31	17	Noumea - NH – Noumea – annex to AUSTRALIEN
1914	1914-08-21	1914-09-09	19	Noumea - NH – Noumea – too late for SYDNEY
1914	1914-09-17	1914-10-13	26	Noumea - NH – Noumea
1914	1914-10-21	1914-11-08	18	Noumea - NH – Noumea
1914	1914-11-22	1914-12-09	17	Noumea - NH – Noumea
1914	1914-12-19	1915-01-06	18	Noumea - NH – Noumea
1915	1915-01-20	1915-02-02	13	Noumea ONLY
1915	1915-02-13	1915-03-06	21	Noumea - NH – Noumea
1915	1915-03-15	1915-04-02	18	Noumea - NH – Noumea
1915	1915-04-09	1915-05-01	22	Noumea - NH – Noumea
1915	1915-05-11	1915-05-29	18	Noumea - NH – Noumea
1915	1915-06-08	1915-06-29	21	Noumea - NH – Noumea
1915	1915-07-07	1915-07-26	19	Noumea - NH – Noumea
1915	1915-08-04	1915-08-22	18	MM St Antoine made a trip – Noumea only
1915	1915-08-19	1915-09-05	17	MM? St. Louis made a trip – Noumea only
1915	1915-09-01	1915-09-20	19	MM St Antoine made a trip – Noumea only
1915	1915-09-17	1915-10-07	20	MM? St. Louis made a trip – Noumea only
1915	1915-09-28	1915-10-17	19	MM St Antoine made a trip – Noumea only
1915	1915-10-13	1915-11-05	23	MM? St. Louis made a trip – Noumea only
1915	1915-10-30	1915-11-17	18	Noumea - NH – Noumea
1915	1915-11-27	1915-12-14	17	Noumea - NH – Noumea
1915	1915-12-24	1916-01-11	18	Noumea - NH – Noumea
1916	1916-01-24	1916-02-11	18	Noumea - NH – Noumea
1916	1916-02-23	1916-03-07	13	Noumea - NH – Noumea
1916	1916-03-16	1916-04-03	18	Noumea - NH – Noumea
1916	1916-04-15	1916-05-02	17	Noumea - NH – Noumea
1916	1916-05-11	1916-05-30	19	Noumea - NH – Noumea
1916	1916-06-10	1916-06-27	17	Noumea - NH – Noumea
1916	1916-07-06	1916-07-24	18	Noumea - NH – Noumea
1916	1916-08-03	1916-08-22	19	Noumea - NH – Noumea
1916	1916-08-30	1916-09-19	20	Noumea - NH – Noumea
1916	1916-10-01	1916-10-20	19	Noumea - NH – Noumea
1916	1916-10-27	1916-11-15	19	Noumea - NH – Noumea
1916	1916-11-24	1916-12-19	25	Noumea only as she hit a reef off New Caledonia
1916	1916-12-23	1917-01-14	22	Noumea - NH – Noumea
1917	1917-02-22	1917-03-16	22	Noumea - NH – Noumea
1917	abt 1917-03-26	1917-04-12	19	Noumea - NH – Noumea
1917	1917-04-18	1917-05-08	20	Noumea - NH – Noumea
1917	1917-05-15	1917-06-03	19	Noumea - NH – Noumea
1917	abt 1917-06-12	1917-07-02	21	Noumea - NH – Noumea
1917	1917-07-06	1917-07-27	21	Noumea - NH – Noumea
1917	1917-08-09	1917-09-04	26	Noumea - NH – Noumea

Year	Sydney departure	back at Sydney	days	port destination
1917	abt 1917-09-17	1917-10-08	21	Noumea - NH arrival dates in Sydney Harbour index
1917	1917-10-14	1917-11-08	25	Noumea - NH arrival dates in Sydney Harbour index
1917	abt 1917-11-17	1917-12-08	21	Noumea - NH arrival dates in Sydney Harbour index
1917	abt 1917-12-18	1918-01-09	22	Noumea - NH arrival dates in Sydney Harbour index
1918	abt 1918-01-17	1918-02-08	22	Noumea - NH arrival dates in Sydney Harbour index
1918	abt 1918-03-19	1918-04-10	22	Noumea - NH arrival dates in Sydney Harbour index
1918	abt 1918-04-19	1918-05-10	21	Noumea - NH - Noumea
1918	1918-05-17	1918-06-08	23	Noumea - NH – Noumea
1918	1918-06-20	1918-07-11	22	Noumea - NH – Noumea
1918	1918-07-19	1918-08-11	23	Noumea - NH – Noumea
1918	1918-08-21	1918-09-13	23	Noumea - NH – Noumea
1918	1918-09-21	1918-10-14	23	Noumea - NH – Noumea
1918	1918-10-22	1918-11-16	25	Noumea - NH – Noumea
1918	1918-11-30	1918-12-21	21	Noumea - NH – Noumea
1919	1919-01-04	1919-01-25	21	Noumea - NH – Noumea
1919	1919-02-03	1919-02-25	22	Noumea - NH – Noumea
1919	1919-03-08	1919-03-28	20	Noumea - NH – Noumea
1919	1919-04-30	1919-05-28	28	NC-NH-NC had been quaratined in Sydney influenza case
1919	1919-06-18	1919-07-23	35	Noumea - NH – Noumea
1919	1919-08-02	1919-08-23	21	Noumea - NH – Noumea
1919	1919-09-01	1919-09-25	24	Noumea - NH – Noumea
1919	1919-10-06	1919-10-18	12	Noumea - NH – Noumea
1919	1919-10-31	1919-11-26	26	Noumea - NH – Noumea
1919	1919-12-05	1919-12-27	22	Noumea - NH – Noumea
1920	1920-05-01	1920-05-18	17	Noumea - NH – Noumea
1920	1920-05-28	1920-06-19	22	Noumea - NH – Noumea
1920	abt 1920-07-05	1920-07-26	21	Noumea - NH – Noumea
1920	1920-07-31	1920-08-26	26	Noumea - NH – Noumea
1920	1920-09-04	1920-09-27	23	Noumea - NH – Noumea
1920	1920-10-02	1920-10-24	22	Noumea - NH – Noumea
1920	1920-10-30	1920-11-22-	24	Noumea - NH – Noumea
1920	1920-11-27	1920-12-19	22	Noumea - NH – Noumea
1920-21	1920-12-24	1921-01-20	27	Noumea - NH – Noumea
1921	1921-01-31	1921-02-23	23	Noumea - NH – Noumea
1921	1921-03-02	1921-03-23	21	Noumea - NH – Noumea
1921	1921-04-02	1921-04-23	21	Noumea - NH – Noumea
1921	1921-04-30	1921-05-21	21	Noumea - NH – Noumea
1921	1921-05-31	1921-06-25	25	Noumea - NH – Noumea
1921	1921-07-04	1921-08-01	28	Noumea - NH – Noumea
1921	1921-08-10	1921-09-03	24	Noumea - NH – Noumea
1921	1921-09-10	1921-10-02	22	Noumea - NH – Noumea
1921	1921-10-11	1921-11-04	24	Noumea - NH – Noumea
1921	1921-11-16	1921-12-10	24	Noumea - NH – Noumea
1921-22	1921-12-22	1922-01-15	24	Noumea - NH – Noumea

Year	Sydney departure	back at Sydney	days	port destination
1922	1922-01-25	1922-02-18	24	Noumea - NH – Noumea
1922	1922-03-13	1922-04-04	22	Noumea - NH – Noumea
1922	1922-04-18	1922-05-06	18	Noumea - NH – Noumea
1922	1922-05-17	1922-06-10	24	Noumea - NH – Noumea
1922	1922-06-21	1922-07-13	22	Noumea - NH – Noumea
1922	1922-07-22	1922-08-12	21	Noumea - NH – Noumea
1922	1922-08-26	1922-09-16	21	Noumea - NH – Noumea
1922	1922-09-27	1922-10-29	32	Noumea - NH – Noumea
1922	1922-11-09	1922-11-30	21	Noumea - NH – Noumea
1922	1922-12-09	1922-12-30	21	Noumea - NH – Noumea
1923	1923-01-10	1923-01-29	19	Noumea - NH – Noumea
1923	1923-02-10	1923-03-05	23	Noumea - NH – Noumea
1923	1923-04-05	1923-04-28	23	Noumea - NH – Noumea
1923	1923-05-05	1923-05-27	22	Noumea - NH – Noumea
1923	1923-06-06	1923-06-25	19	Noumea - NH – Noumea
1923	1923-07-05	1923-07-24	19	Noumea - NH – Noumea
1923	1923-08-01	1923-08-13	12	Noumea - NH – Noumea
1923	1923-08-31	1923-09-17	17	Noumea - NH – Noumea
1923	1923-09-27	1923-10-15	18	Noumea - NH – Noumea
1923	1923-10-25	1923-11-13	19	Noumea - NH – Noumea
1923	1923-11-25	1923-12-15	20	Noumea - NH – Noumea
1923	1923-12-21	1924-01-09	19	Noumea - NH – Noumea
1924	1924-01-17	1924-02-16	30	Noumea - NH – Noumea
1924	1924-03-08	1924-03-20	12	Noumea - NH – Noumea
1924	1924-03-27	1924-04-15	19	Noumea - NH – Noumea
1924	1924-04-24	1924-05-19	25	Noumea - NH – Noumea
1924	1924-05-23	1924-06-17	25	Noumea - NH – Noumea
1924	1924-06-21	1924-07-16	25	Noumea - NH – Noumea
1924	1924-07-19	1924-08-16	28	Noumea - NH – Noumea
1924	1924-08-20	1924-09-18	29	Noumea - NH – Noumea
1924	1924-09-20	1924-10-15	25	Noumea - NH – Noumea
1924	1924-10-21	1924-11-04		Pacifique to and Vincent de St. Paul back
1924	1924-11-12	1924-11-30		Vincent de St. Paul – Noumea & NH
1924-25	1924-12-06	1925-01-10		Vincent de St. Paul – Noumea & NH
From here Dulpeix II made the Noumea – New Hebrides runs.				
1925	1925-01-15	1925-02-05		From Noumea nach Saigon
15 January 1925 sailed from Noumea to Saigon, arrived there on 5 February 1925 and was demolished in March 25.				