

**THE NEW HEBRIDES RUNS OF THE TITUS  
BURNS PHILP & CO. LTD.**

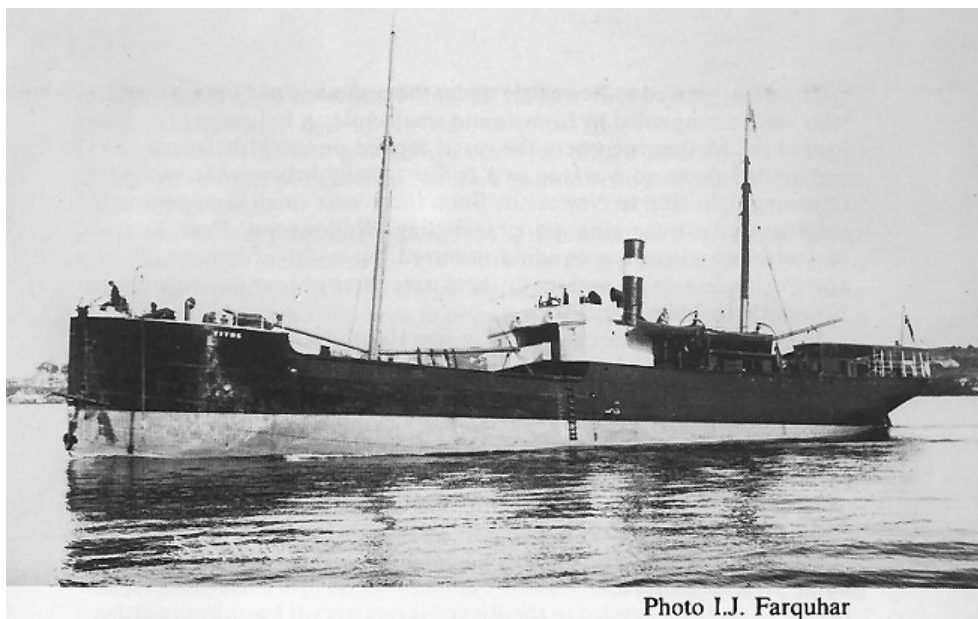


Photo I.J. Farquhar

Wilkinson / Willson: The Main Line Fleet of Burns Philp

789 gross tons, 517 net. Lbd: 185'8" x 27'1" x 14'6". Iron hulled steamship uilt by A Stephen & Sons, Glasgow for G Anderson, Hamburg. Compound SC engine 80 nhp built by shipbuilder. 1884 W C Walker of Melbourne registered as owner. August 1891 Cannifex & Arhurst. August 1893 Orr & Fischer. November 1893 J Walker & Partners. 1898 owned by this concern with Sydney registry and operated on most of the company's Island trades until 1908 when hulked for use in Suva, thus ending her 'ship' status. Suttled off Suva 19th March 1919

<http://www.flotilla-australia.com/burnsphilp3.htm>

Year	date departure	date arrival	port destination
1896		1896-01-04	From Cairns - ownership to Burns Philp & Co. Ltd.
1896	1896-01-16	1896-03-04	New Guinea Solomon Islands, New Hebrides
(1896)	(1896-03-11)	(1896-04-20)	BSIP NG (NO NH)
(1896)	(1896-04-27)	(1896-06-16)	BSIP NG (NO NH)
(1896)	(1896-06-19)	(1896-08-01)	BSIP NG (NO NH)
(1896)	(1896-09-04)	(1896-10-15)	BSIP NG (NO NH)
(1896)	(1896-10-20)	(1896-12-03)	BSIP NG (NO NH)
(1896)	(1896-12-09)	(1897-01-23)	BSIP NG (NO NH)
(1897)	(1897-01-29)	(1897-03-14)	BSIP NG (NO NH)
(1897)	(1897-03-19)	(1897-05-07)	BSIP NG (NO NH)
(1897)	(1897-05-11)	(1897-06-30)	BSIP NG (NO NH)
(1897)	(1897-07-09)	(1897-08-20)	BSIP NG (NO NH)
(1897)	(1897-08-30)	(1897-10-20)	NG
(1897)	(1897-10-29)	(1897-12-22)	BSIP NG (NO NH)
(1897)	(1897-12-30)	(1898-02-15)	BSIP NG (NO NH)
(1898)	(1898-02-25)	(1898-0415)	BSIP NG (NO NH)

Year	date departure	date arrival	port destination
1898	1898-04-44	1898-06-19	BSIP NG New Hebrides
1898	1898-07-04	1898-07-30	New Caledonia, New Hebrides
(1898)	(1898-08-07)	(1898-09-20)	BSIP NG Banks (NO NH)
1898	1898-10-01	1898-11-19	Norfolk, New Hebs, Banks
(1898)	(1898-11-30)	(1899-03-23)	Noumea, G&E, Marshall Ids.
From October 1899 until 21 Dec 1900 TITUS was chartered by the Pacific Islands Company			
1901	1901-03-01	1901-04-23	Howe, Norfolk, New Hebs, BSI, Santa Cruz
1901	1901-05-01	1901-06-24	Howe, Norfolk, New Hebs, BSI, Santa Cruz
1901	1901-07-03	1901-08-30	Howe, Norfolk, New Hebs, BSI, Santa Cruz
1901	1901-09-06	1901-10-22	Howe, Norfolk, New Hebs, BSI, Santa Cruz
1901	1901-11-01	1901-12-22	Howe, Norfolk, New Hebs, BSI, Santa Cruz
1901	1901-12-31	1902-02-21	Howe, Norfolk, New Hebs, BSI, Santa Cruz
1902	1902-03-02	1902-04-24	Howe, Norfolk, New Hebs, BSI, Santa Cruz
1902	1902-05-02	1902-06-30	Howe, Norfolk, New Hebs, BSI, Santa Cruz
1902	1902-07-02	1902-08-28	Howe, Norfolk, New Hebs, BSI, Santa Cruz
1902	1902-09-03	1902-10-22	Howe, Norfolk, New Hebs, BSI, Santa Cruz
1902	1902-11-06	1902-12-27	Howe, Norfolk, New Hebs, BSI, Santa Cruz
1903	1903-01-02	1903-02-23	Howe, Norfolk, New Hebs, BSI, Santa Cruz
1903	1903-02-28	1903-04-22	Howe, Norfolk, New Hebs, BSI, Santa Cruz
1903	1903-05-02	1903-06-28	Howe, Norfolk, New Hebs, BSI, Santa Cruz
1903	1903-09-23	1903-10-19	New Hebrides via Newcastle & Noumea
1903	1903-10-31	1904-01-24	Howe, Norfolk (Ovalau search) Vila then G&E, Vila
1904	1904-02-02	1904-04-20	Howe, Norfolk Vila then G&E Vila
1904	1904-04-30	1904-07-15	Howe, Norfolk Vila then G&E Vila
1904	1904-08-01	1904-10-15	Howe, Norfolk Vila then G&E Vila
1904	1904-10-31	1905-01-18	Howe, Norfolk Vila then G&E Vila
1905	1905-01-21	1905-04-01	Howe, Norfolk Vila then G&E Vila
1905	1905-04-15	1905-06-30	Howe, Norfolk Vila then G&E Vila
1905	1905-07-20	1905-10-02	Howe, Norfolk Vila then G&E Vila
1905	1905-10-14	1906-01-03	Howe, Norfolk Vila then G&E Vila
1906	1906-01-15	1906-04-03	Howe, Norfolk Vila then G&E Vila
1906	1906-04-14	1906-07-04	Howe, Norfolk BSI then G&E Vila
1906	1906-07-14	1906-10-10	Howe, Norfolk Vila then G&E Vila
1906	1906-10-12	1906-11-28	G&E, Vila on the way home only
1906	1906-12-05	1907-01-27	Brisbane Vila G&E Vila
1907	1907-02-02	1907-04-01	Brisbane Vila G&E Vila
1907	1907-04-05	1907-05-29	Brisbane Vila G&E Vila
1907	1907-06-05	1907-08-02	Brisbane Vila G&E Vila
1907	1907-08-09	1908-02-23	from G&E to Port Vila - converted into a hulk there
1919			scuttled in March 1919